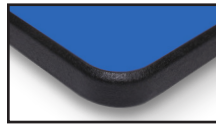


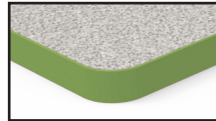
Lotz Armor Edge™ Tops:

Lotz Armor Edge™ top is constructed of 1.125" thick MDF (medium density fiberboard) core. MDF is a superior material for screw holding abilities exceeding 250 lbs., breaking strength and load tests. The back material is phenolic which **prevents moisture penetration** to core material and provides an anti gum surface. High pressure laminate is bonded to the **MDF core**. The .25" beveled radius edge is finished using our exclusive Lotz Armor Edge™, a polyurea, which is extremely strong and durable. **This edge will not separate from the MDF core material and makes the edge water tight.** Lotz Armor Edge™ comes black standard. Colors available.



3mm Tops:

The core material is 1.125" thick particle board with a phenolic backer sheet and high pressure laminate on top. 3mm PVC edge banding is applied to all sides, radius corners.



Optional top surface choices include most Wilsonart matte (-60) finish laminates with possible up charges. Other vendors available upon request.

Options:

- Non-WB standard laminate
- Markerboard top
- Black chemical resistant top
- Custom sizes
- Non-standard edge band

Pneumatic Foot Pedal X-Base:

10-gauge steel X-Base, 250N column with 7-gauge mounting plate, available in smooth silver only. Pneumatic adjustable (foot controlled) and comes standard with both glides and casters. The glides consist of four Grand Hank glides with a 3/8-16 x 1" stem with a base height of 27" - 40". Casters consist of four dual wheel locking casters with a 3/8-16 x 1" stem with a base height of 29" - 42".

Base Color Options:



Smooth Silver (standard) (-G4)

Shipping Class: 70

NMFC#: Top 83620-2 Base 097720

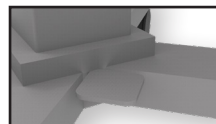
Standard Features:



Dual wheel soft tread locking casters



2.5" Grand Hank Glide



Foot Pedal



Base attached via threaded metal inserts and bolts

Elevate Square Café Table

Lotz AE™ Top	Wgt	3mm Top	Wgt	Description	Top Size"	Table H" w/Grand Hank Glides	Table H" w/Casters
PNX7065-ADJ	55	PNX6065-ADJ	54	Pneumatic Adj. 26" X-Base, Square Top	24 x 24	27 - 40	29 - 42
PNX7077-ADJ	67	PNX6077-ADJ	65	Pneumatic Adj. 26" X-Base, Square Top	30 x 30	27 - 40	29 - 42
PNX7088-ADJ*	82	PNX6088-ADJ*	79	Pneumatic Adj. 32" X-Base, Square Top	36 x 36	27 - 40	29 - 42

*36" x 36" Square Top Available May 2020



Elevate Round Café Table

Lotz AE™ Top	Wgt	3mm Top	Wgt	Description	Top D"	Table H" w/Grand Hank Glides	Table H" w/Casters
PNX7189-ADJ	60	PNX6189-ADJ	59	Pneumatic Adj. 26" X-Base, Round Top	30	27 - 40	29 - 42
PNX7190-ADJ*	71	PNX6190-ADJ*	69	Pneumatic Adj. 32" X-Base, Round Top	36	27 - 40	29 - 42
PNX7191-ADJ*	85	PNX6191-ADJ*	82	Pneumatic Adj. 32" X-Base, Round Top	42	27 - 40	29 - 42

*36" & 42" Round Tops Available May 2020

