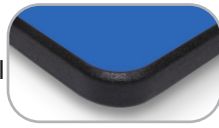


Elevate Admin Tables specifications

Lotz Armor Edge™ Tops:

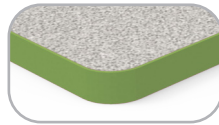
Lotz Armor Edge™ top is constructed of 1.125" thick MDF (medium density fiberboard) core. MDF is a superior material for screw holding abilities exceeding 250 lbs., breaking strength and load tests.



The back material is phenolic which **prevents moisture penetration** to core material and provides an anti gum surface. High pressure laminate is bonded to the **MDF core**. The .25" beveled radius edge is finished using our exclusive Lotz Armor Edge™, a polyurea, which is extremely strong and durable. **This edge will not separate from the MDF core material and makes the edge water tight.** Lotz Armor Edge™ comes black standard. Colors available.

3mm Tops:

The core material is 1.125" thick particle board with a phenolic backer sheet and high pressure laminate on top. 3mm PVC edge banding is applied to all sides, radius corners.



Optional top surface choices include **writable surface laminate or chemical resistant laminate** and most Wilsonart matte (-60) finish laminates with possible up charges. Other vendors available upon request.

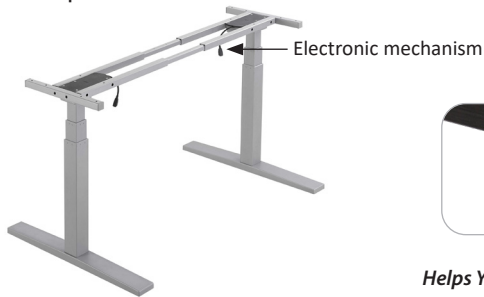
Shipping Class: 70

NMFC: Tops: 83620-2 Legs: 097720

Assembly: Unassembled

Electric Base:

The Elevate Electric Adjustable Table consist of two 1.5" x 3.25" pneumatic steel columns that are attached to the top with screws that are provided. Top has pre-drilled pilot holes. The base spread is 3" x 23". Maximum lifting speed is 1.3" per second, soft start and stop, control switch has digital readout showing height, programmable lower stop, 3 programmable memory positions, UL listed 12 VAC, Standby less than .05w, maximum weight capacity is 260lbs, quiet, noise level less than 50 dB, safety anti-collision, runs for 2 seconds in opposite direction when a load spike is detected and has a 10-foot power cord. Comes standard with glides and casters are optional.



Digital Display
Helps You Find the Perfect Height!

Hand Crank Base:

The Elevate Hand Crank Adjustable Table consist of two 2.75" x 2.75" pneumatic steel columns that are attached to the top with screws that are provided. Top has pre-drilled pilot holes. The base spread is 3.25" x 23". The frame consist of an upper and lower support bars along with a gear box rod. Adjustable frame size to accommodate multiple table lengths. Handle retracts under table and is interchangeable from left to right sides. Maximum recommended lift weight is 200lbs. Comes standard with glides and casters are optional.



Finish:

The base are available in smooth silver as standard or with a texture black finish as optional.



Smooth Silver (standard)



Textured Black

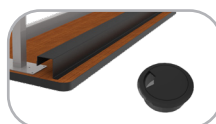
Optional Features:



Markerboard Top (-__MB)



Power Supply Modules



Metal Wire Management (-WM)
OR Grommets (-GR)



Elevate Electric Adjustable Table

<i>Lotz AE™ Top</i>	<i>AE™ Wgt</i>	<i>3mm Top</i>	<i>3mm Wgt</i>	<i>Top D" x L"</i>	<i>Table H" w/ Glides</i>
GIB7069-1000-1010	112	GIB6069-1000-1010	110	24 x 48	24.5 - 50.5
GIB7071-1000-1010	123	GIB6071-1000-1010	120	24 x 60	24.5 - 50.5
GIB7072-1000-1010	134	GIB6072-1000-1010	130	24 x 72	24.5 - 50.5
GIB7080-1000-1010	123	GIB6080-1000-1010	120	30 x 48	24.5 - 50.5
GIB7082-1000-1010	136	GIB6082-1000-1010	133	30 x 60	24.5 - 50.5
GIB7083-1000-1010	150	GIB6083-1000-1010	145	30 x 72	24.5 - 50.5



Elevate Hand Crank Adjustable Table

<i>Lotz AE™ Top</i>	<i>AE™ Wgt</i>	<i>3mm Top</i>	<i>3mm Wgt</i>	<i>Top D" x L"</i>	<i>Table H" w/ Glides</i>	<i>Table H" w/ Casters (not included in price)</i>
GIB7069-1000-1002	97	GIB6069-1000-1002	95	24 x 48	27.75 - 41	29.5 - 42.75
GIB7071-1000-1002	108	GIB6071-1000-1002	105	24 x 60	27.75 - 41	29.5 - 42.75
GIB7072-1000-1002	119	GIB6072-1000-1002	110	24 x 72	27.75 - 41	29.5 - 42.75
GIB7080-1000-1002	108	GIB6080-1000-1002	105	30 x 48	27.75 - 41	29.5 - 42.75
GIB7082-1000-1002	121	GIB6082-1000-1002	113	30 x 60	27.75 - 41	29.5 - 42.75
GIB7083-1000-1002	135	GIB6083-1000-1002	130	30 x 72	27.75 - 41	29.5 - 42.75