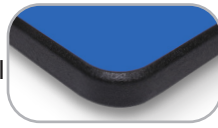


# Elevate Teacher's Desk

## specifications

### Lotz Armor Edge™ Tops:

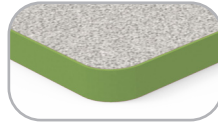
Lotz Armor Edge™ top is constructed of 1.125" thick MDF (medium density fiberboard) core. MDF is a superior material for screw holding abilities exceeding 250 lbs., breaking strength and load tests.



The back material is phenolic which **prevents moisture penetration** to core material and provides an anti gum surface. High pressure laminate is bonded to the **MDF core**. The .25" beveled radius edge is finished using our exclusive Lotz Armor Edge™, a polyurea, which is extremely strong and durable. **This edge will not separate from the MDF core material and makes the edge water tight.** Lotz Armor Edge™ comes black standard. Colors available.

### 3mm Tops:

The core material is 1.125" thick particle board with a phenolic backer sheet and high pressure laminate on top. 3mm PVC edge banding is applied to all sides, radius corners.



Optional top surface choices include **writable surface laminate or chemical resistant laminate** and most Wilsonart matte (-60) finish laminates with possible up charges. Other vendors available upon request.

**Shipping Class:** 70

**NMFC:** Tops: 83620-2 Legs: 097720

**Assembly:** Unassembled

### Base:

The Elevate Teacher's desk consist of two pneumatic columns ① that are 15-gauge steel. Tube dimensions are as follows: outer tube = 2.75" x 2.75", middle tube = 2.5" x 2.5" and the inner tube = 2.25" x 2.25". The guidance system in these columns uses a roller cage design. This roller cage uses steel roller bearings as an interface between the steel tubes of the legs. This design allows for smooth adjustments between the moving parts of the columns with less friction. The stainless steel bands which travel the length of the base, synchronize the 2 columns ensuring that both columns lift evenly together every time. Columns consist of T Foot sets ② that have passed all BIFMA x5.5 tests and come standard with four dual wheel soft tread locking casters and four 2.5" Grand Hank glides.

The top frame is a 15-gauge, fully welded steel tube that is 1" x 2". The top frame is secured to the top with provided screws.

There is a plastic handle that attaches to the bottom of the top, 1" from the edge so it is easily accessible to adjust the table to different heights.

### Finish:

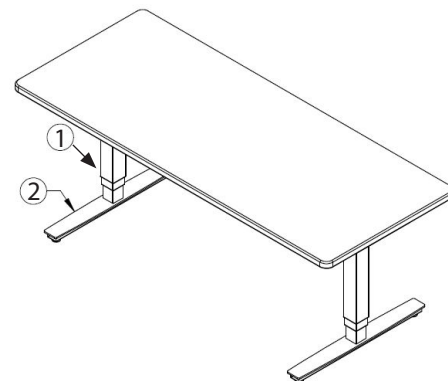
The base is available in smooth silver as standard or with a texture black finish as optional.



Smooth Silver (standard)



Textured Black



### Standard Features:



2.5" Grand Hank glide (-HG)



Dual wheel soft tread locking caster (-CA)



Plastic handle

### Optional Features:



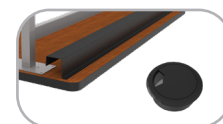
1.5" Soft Touch glide (-FG)



Markerboard Top (-MB)



Power Supply Modules



Metal Wire Management (-WM)  
OR Grommets (-GR)

V052920 Specs subject to change.

# Elevate Teacher's Desk specifications



## Elevate Teacher's Desk

<i>Lotz AE™ Top</i>	<i>AE™ Wgt</i>	<i>3mm Top</i>	<i>3mm Wgt</i>	<i>Top D" x L"</i>	<i>Table H" w/Grand Hank Glides</i>	<i>Table H" w/Casters</i>
KPT7069-ADJ	114	KPT6069-ADJ	112	24 x 48	28 - 47.5	30.25 - 49.75
KPT7071-ADJ	129	KPT6071-ADJ	126	24 x 60	28 - 47.5	30.25 - 49.75
KPT7072-ADJ	145	KPT6072-ADJ	141	24 x 72	28 - 47.5	30.25 - 49.75
KPT7080-ADJ	129	KPT6080-ADJ	126	30 x 48	28 - 47.5	30.25 - 49.75
KPT7082-ADJ	146	KPT6082-ADJ	143	30 x 60	28 - 47.5	30.25 - 49.75
KPT7083-ADJ	165	KPT6083-ADJ	160	30 x 72	28 - 47.5	30.25 - 49.75

