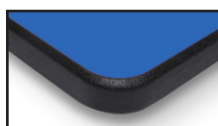


Tubular Base Tables

specifications

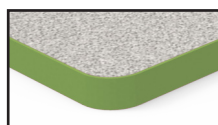
Lotz Armor Edge™ Tops:

Lotz Armor Edge™ top is constructed of 1.125" thick MDF (medium density fiberboard) core. MDF is a superior material for screw holding abilities exceeding 250 lbs., breaking strength and load tests. The back material is phenolic which **prevents moisture penetration** to core material and provides an anti gum surface. High pressure laminate is bonded to the **MDF core**. The .25" beveled radius edge is finished using our exclusive Lotz Armor Edge™, a polyurea, which is extremely strong and durable. **This edge will not separate from the MDF core material and makes the edge water tight.** Armor Edge comes black standard with other colors available.



3mm Tops:

The core material is 1.125" thick particle board with a phenolic backer sheet and high pressure laminate on top. 3mm PVC edge banding is applied to all four sides. Corners can be radiused or square.



Top surface choices include **whiteboard laminate** chemical resistant laminate and most Wilsonart matte (-60) finish laminates. Other vendors available upon request.

Flip Mechanism:

Flips mechanisms are injection molded with aluminium and steel. There is a 1 handle release for each pair of legs. This handle is mechanically attached to the table base using #12-14 screws. The adjustable leveler is 1/4-20 x 1 3/4" long shank. The handle release mounts on the underside of the table and is centered on the table length close to the edge of the table. The single handle allows for an individual to release both mechanisms simultaneously and flip the table up and down.

Flip Mechanism:

Bar Height (add -B to model #) (42" fixed) (29"-42" adj.)
 Inline nesting (add -3030 to model #) (Rectangle & Tide)

Shipping Class: 70

NMFC#: 83620-2

Standard Options:



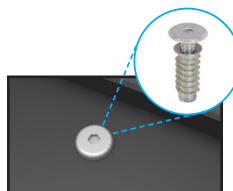
Handle release (All tables excluding Rounds)



Flip release (Round tables only)



Dual wheel locking casters



Legs plates attached via threaded metal inserts and screws

Tubular T-Base Legs:

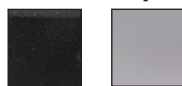
Tubular T-Base legs are 2" tubular, 14-gauge steel tube with dual wheel locking casters with a 14-gauge base. Legs are attach to desk with 16 metal-to-metal inserts and screws. Legs are available in a fixed or adjustable height. Fixed legs stand at 27.75" high. Adjustable legs range from 24.75 to 33.75" in 1 inch increments. End caps are welded and polished to look like solid steel. Certain legs are built for inline nesting, which allows for easy storage of tables.

Tubular X-Base Legs:

Tubular X-Base legs are 3" or 4" tubular, 16-gauge steel tube with dual wheel locking casters and a 14-gauge base. Legs are attach to desk with 8-12 metal-to-metal inserts and screws (depending on model #). Legs are available in a fixed height. Fixed legs stand at 27.75" high. End caps are welded and polished to look like solid steel.

Certain legs are built for inline nesting, which allows for easy storage of tables.

Frame Color Options:



Textured Black (-09) Smooth Silver (standard) (-G4)



Tubular T Base



Adjustable Spring Clip



Tubular X-Base



Tubular T Base Inline

Flip Top Tubular T-Base Rectangle Tables

Fixed Height

Lotz AE™ Top	AE™ Wgt	3mm Top	3mm Wgt	Description	Top D" x L"	Table H"
GIB7069-CH7722	64	GIB6069-CH7722	62	Tubular T-Base, Fixed Height	24 x 48	29
GIB7071-CH7722	75	GIB6071-CH7722	72	Tubular T-Base, Fixed Height	24 x 60	29
GIB7072-CH7722	91	GIB6072-CH7722	87	Tubular T-Base, Fixed Height, Support Bar	24 x 72	29
GIB7080-CH7722	75	GIB6080-CH7722	72	Tubular T-Base, Fixed Height	30 x 48	29
GIB7082-CH7722	88	GIB6082-CH7722	85	Tubular T-Base, Fixed Height	30 x 60	29
GIB7083-CH7722	107	GIB6083-CH7722	102	Tubular T-Base, Fixed Height, Support Bar	30 x 72	29
GIB7090-CH7726	88	GIB6090-CH7726	84	Tubular T-Base, Fixed Height	36 x 48	29
GIB7092-CH7726	104	GIB6092-CH7726	99	Tubular T-Base, Fixed Height	36 x 60	29
GIB7093-CH7726	124	GIB6093-CH7726	119	Tubular T-Base, Fixed Height, Support Bar	36 x 72	29

Adjustable Height

Lotz AE™ Top	AE™ Wgt	3mm Top	3mm Wgt	Description	Top D" x L"	Table H"
GIB7069-AHCH7722	66	GIB6069-AHCH7722	64	Tubular T-Base, Adj. Height	24 x 48	26 - 35
GIB7071-AHCH7722	77	GIB6071-AHCH7722	74	Tubular T-Base, Adj. Height	24 x 60	26 - 35
GIB7072-AHCH7722	93	GIB6072-AHCH7722	89	Tubular T-Base, Adj. Height, Support Bar	24 x 72	26 - 35
GIB7080-AHCH7722	77	GIB6080-AHCH7722	74	Tubular T-Base, Adj. Height	30 x 48	26 - 35
GIB7082-AHCH7722	90	GIB6082-AHCH7722	87	Tubular T-Base, Adj. Height	30 x 60	26 - 35
GIB7083-AHCH7722	109	GIB6083-AHCH7722	104	Tubular T-Base, Adj. Height, Support Bar	30 x 72	26 - 35
GIB7090-AHCH7726	90	GIB6090-AHCH7726	86	Tubular T-Base, Adj. Height	36 x 48	26 - 35
GIB7092-AHCH7726	106	GIB6092-AHCH7726	101	Tubular T-Base, Adj. Height	36 x 60	26 - 35
GIB7093-AHCH7726	126	GIB6093-AHCH7726	121	Tubular T-Base, Adj. Height, Support Bar	36 x 72	26 - 35



Flip Top Tubular T-Base Shaped Tables

Half-Round

Lotz AE™ Top	AE™ Wgt	3mm Top	3mm Wgt	Desc.	Top D" x L"	Table H"
GIB7203-3030-CH7722	55	GIB6203-3030-CH7722	53	Fixed	24 x 48	29
GIB7204-3030-CH7726	76	GIB6204-3030-CH7726	73	Fixed	30 x 60	29
GIB7203-3030-AHCH7722	57	GIB6203-3030-AHCH7722	55	Adj.	24 x 48	26 - 35
GIB7204-3030-AHCH7726	78	GIB6204-3030-AHCH7726	75	Adj.	30 x 60	26 - 35



Reef

Lotz AE™ Top	AE™ Wgt	3mm Top	3mm Wgt	Desc.	Top D" x L"	Table H"
GIB7804-3030-CH7726	68	GIB6804-3030-CH7726	66	Fixed	30 x 54	29
GIB7804-3030-AHCH7726	70	GIB6804-3030-AHCH7726	68	Adj.	30 x 54	26 - 35



Flip Top Tubular T-Base Shaped Tables

Tide

Lotz AE™ Top	AE™ Wgt	3mm Top	3mm Wgt	Desc.	Top D" x L"	Table H"
GIB7805-CH7722	68	GIB6805-CH7722	68	Fixed	30 x 54	29
GIB7805-AHCH7722	70	GIB6805-AHCH7722	70	Adj.	30 x 54	26 - 35



GIB6805-CH7722

Trapezoid

Lotz AE™ Top	AE™ Wgt	3mm Top	3mm Wgt	Desc.	Top D" x L"	Table H"
GIB7210-3030-CH7722	55	GIB6210-3030-CH7722	53	Fixed	24 x 48	29
GIB7211-3030-CH7726	76	GIB6211-3030-CH7726	73	Fixed	30 x 60	29
GIB7210-3030-AHCH7722	57	GIB6210-3030-AHCH7722	55	Adj.	24 x 48	26 - 35
GIB7211-3030-AHCH7726	78	GIB6211-3030-AHCH7726	75	Adj.	30 x 60	26 - 35



GIB6211-3030-CH7722

Flip Top Tubular X-Base Round Table

Fixed Height

Lotz AE™ Top	AE™ Wgt	3mm Top	3mm Wgt	Top Dia."	Table H"	AE™/3mm \$	Markerboard \$ -__MB
GIB7189-FTC7526	43	GIB6189-FTC7526	42	30	29	\$1177	\$1275
GIB7190-FTC7526	52	GIB6190-FTC7526	50	36	29	1227	1372
GIB7192-FTC7538	97	GIB6192-FTC7538	93	48	29	1493	1574



GIB6190-FTC7526