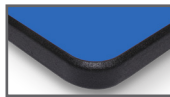




LOBO Table specifications

Lotz Armor Edge™ Tops:

Lotz Armor Edge™ top is constructed of 1.125" thick MDF (medium density fiberboard) core. MDF is a superior material for screw holding abilities exceeding 250 lbs., breaking strength and load tests. The back material is phenolic which **prevents moisture penetration** to core material and provides an anti gum surface. High pressure laminate is bonded to the **MDF core**. The .25" beveled radius edge is finished using our exclusive Lotz Armor Edge™, a polyurea, which is extremely strong and durable. **This edge will not separate from the MDF core material and makes the edge water tight.** Lotz Armor Edge™ comes black standard. Colors available.



3mm Tops:

The core material is 1.125" thick particle board with a phenolic backer sheet and high pressure laminate on top. 3mm PVC edge banding is applied to all sides, radius corners.



Butcher Block Tops:

Hardwood: 1.75" thick face-glued hardwood strips with 0.125" radius all corners/edges with two coats catalyzed clear lacquer top and sides with one clear coat bottom with eased edges and corners.

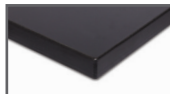


Maple: 1.75" thick face-glued maple strips with 0.125" radius edge and catalyzed lacquer finish 2 coats top, 1 coat bottom.



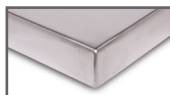
Phenolic Tops:

1" thick black phenolic resin and cellulose fiber composite top with .125" radius edges and corners with high resistance to chemicals, humidity and abrasions.



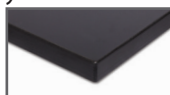
Stainless Steel Tops:

1.625" stainless steel top, 16-gauge #304 stainless steel with particle board core, wrapped and welded all corners and edges, phenolic backer. This is not intended for heavy washdown areas.



Epoxy Tops**:

An optional 1" epoxy resin top with .125" beveled edge is also available providing the greatest combination of physical and chemical resistance property as well as heat and flame resistance.



LOBO tables have passed BIFMA testing

LOBO Frame:

The solid steel apron frame is 1" x 2", 16-gauge steel that is MIG welded using a 10-gauge reception plate with (1) .375" hole drilled for leg mounting with .3125" bolt and locking washer and nut from leg. The frame has welded tabs at preset locations used for fastening the apron frame to the back of the table top. Optional leg gussets.

LOBO Legs:

Fixed - 1.5" square (-FX)

28.5" fixed legs for the LOBO Series are 1.5" square, 14-gauge square tube with one (1) .3125" bolt for attachment to the apron. Nylon adjustment glide with a .375" stud with a 1" travel path. Use #10 0.75" square pan screws to secure the leg plates to the table top**.

Adjustable - 1.5" square (-ADJ)

Adjustable - 2" square Big Paw (-ABP)

Adjustable - 2" round (-ALR)

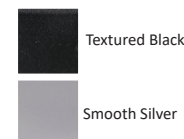
The adjustable leg options include a 1.5" or 2", 14-gauge square or 2", 14-gauge round outside tube with two (2) holes for positive contact and safety with adjustability. The inner portion of the leg is a 1.25" square or 1.75" square or round, 16-gauge tube which is flow-drilled with tapped holes. The inner leg section is fabricated to fit into the upper leg assembly. The 1.5" square leg can adjust from 22.5"-36.5" and the 2" square and round legs can adjust from 22.25"-36.25"; these adjustments are made through two (2) M6 screws into the tapped holes of the lower leg. Nylon adjustment glide with a .375" stud with a 1" travel path. Use #10 0.75" square pan screws to secure the leg plates to the table top**.

Gorner Gusset Kit:

Recommended for all LOBO tables with caster option, table size that exceeds 30" x 72" or intended table use heights greater than 31" for increased stability. Kits are not available on any shaped tables excluding rounds.

Finish:

The apron frame and the leg assembly are powder coated with a polyester texture black finish to 3mil in thickness as standard.



-ADJ, -FX & -ALR are available in black and smooth silver.

-ABP are only available in black

****Epoxy tops require an adhesive or silicone(not included) to attach to LOBO frame.**

Shipping Class: 70 (tops) Density Based Class (frames*)

NMFC#: 83620 (Tops), 82790 (frames*)

NMFC#: 83640 (Stainless Steel Tops), 82790 (frames*)

*Based on qty. shipped



Rectangle

LOBO Rectangle Tables

Laminate w/Lotz AE™	Wgt.*	Laminate w/3mm	Wgt.*	Phenolic Top	Wgt.*	Epoxy Top	Wgt.*	Hardwood	Wgt.*	Stainless Steel	Wgt.	Top D" x L"
LOB7067	62	LOB6067	60	LOB8067	75	LOBE067	90	LOB9067	72	LOBSR067	96	24 x 36
LOB7068	68	LOB6068	66	LOB8068	84	LOBE068	101	LOB9068	80	LOBSR068	108	24 x 42
LOB7069	76	LOB6069	74	LOB8069	94	LOBE069	114	LOB9069	90	LOBSR069	122	24 x 48**
LOB7070	83	LOB6070	80	LOB8070	103	LOBE070	125	LOB9070	98	LOBSR070	134	24 x 54**
LOB7071	89	LOB6071	86	LOB8071	111	LOBE071	136	LOB9071	106	LOBSR071	146	24 x 60**
LOB7072	103	LOB6072	99	LOB8072	129	LOBE072	159	LOB9072	123	LOBSR072	171	24 x 72
LOB7073	114	LOB6073	110	LOB8073	145	LOBE073	180	LOB9073	138	LOBSR073	194	24 x 84
LOB7074	127	LOB6074	122	LOB8074	162	LOBE074	202	LOB9074	154	LOBSR074	218	24 x 96
LOB7078	71	LOB6078	69	LOB8078	87	LOBE078	106	LOB9078	84	LOBSR078	114	30 x 36
LOB7079	78	LOB6079	76	LOB8079	98	LOBE079	120	LOB9079	93	LOBSR079	128	30 x 42
LOB7080	88	LOB6080	85	LOB8080	110	LOBE080	135	LOB9080	105	LOBSR080	145	30 x 48
LOB7082	104	LOB6082	101	LOB8082	132	LOBE082	163	LOB9082	126	LOBSR082	160	30 x 60**
LOB7083	120	LOB6083	115	LOB8083	153	LOBE083	190	LOB9083	145	LOBSR083	205	30 x 72**
LOB7084	133	LOB6084	128	LOB8084	171	LOBE084	215	LOB9084	163	LOBSR084	233	30 x 84
LOB7085	149	LOB6085	143	LOB8085	193	LOBE085	243	LOB9085	183	LOBSR085	263	30 x 96
LOB7088	80	LOB6088	77	LOB8088	100	LOBE088	122	LOB9088	95	LOBSR088	131	36 x 36
LOB7089	89	LOB6089	86	LOB8089	112	LOBE089	138	LOB9089	107	LOBSR089	149	36 x 42
LOB7090	100	LOB6090	96	LOB8090	126	LOBE090	156	LOB9090	120	LOBSR090	168	36 x 48
LOB7092	120	LOB6092	115	LOB8092	153	LOBE092	190	LOB9092	145	LOBSR092	205	36 x 60
LOB7093	137	LOB6093	132	LOB8093	177	LOBE093	222	LOB9093	168	LOBSR093	240	36 x 72**
LOB7094	154	LOB6094	148	LOB8094	201	LOBE094	253	LOB9094	190	LOBSR094	274	36 x 84
LOB7095	171	LOB6095	164	LOB8095	224	LOBE095	284	LOB9095	212	LOBSR095	308	36 x 96
LOB7098	100	LOB6098	96	LOB8098	127	LOBE098	158	LOB9098***	121	LOBSR098	170	42 x 42
LOB7099	133	LOB6099	128	LOB8099	171	LOBE099	215	LOB9099***	163	LOBSR099	233	42 x 60**
LOB7100	153	LOB6100	147	LOB8100	200	LOBE100	252	LOB9100***	189	LOBSR100	273	42 x 72
LOB7107	123	LOB6107	118	LOB8107	158	LOBE107	198	LOB9107***	150	LOBSR107	214	48 x 48
LOB7108	147	LOB6108	141	LOB8108	191	LOBE108	241	LOB9108***	181	LOBSR108	261	48 x 60
LOB7109	171	LOB6109	164	LOB8109	224	LOBE109	284	LOB9109***	212	LOBSR109	308	48 x 72
LOB7111	216	LOB6111	206	LOB8111	286	LOBE111	366	LOB9111***	270	LOBSR111	398	48 x 96

*Weight based on adjustable legs (-ADJ)

**Frame size is stocked.

**Top is in 2 pieces, .5" undersized, field assembled with joint connector bolt.

***Weights are based on the LOBO 1.5" square adjustable legs (-ADJ). Other leg options will change the weight of the table. Call Estimating for these weights.**

DO NOT put casters on tables with epoxy resin tops, this voids the warranty.

LOBO Shaped Tables

Laminate w/Lotz AE™	Wgt.*	Laminate w/3mm	Wgt.	Lab Top	Wgt.*	Shape	Top DxL
LOB7190	65	LOB6190	63	N/A		Round	36"
LOB7191	81	LOB6191	78	N/A		Round	42"
LOB7192	98	LOB6192	94	N/A		Round	48"
LOB7194	138	LOB6194	132	N/A		Round	60"
LOB7212	58	LOB6212	57	LOB8212	63	Trapezoid	24" x 24" x 48"
LOB7211	78	LOB6211	77	LOB8211	87	Trapezoid	30" x 30" x 60"
LOB7220	134	LOB6220	129	N/A		Kidney	48" x 72"
LOB7226	120	LOB6226	116	N/A		Horseshoe	48" x 72"
LOB7250	73	LOB6250	70	N/A		Clover	48"

***Weights are based on the LOBO 1.5" square adjustable legs (-ADJ). Other leg options will change the weight of the table. Call Estimating for these weights.**



Clover - #250



Trapezoid



Horseshoe - #226



Kidney - #220

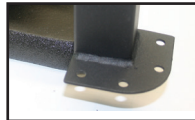


Round

LOBO Standard Features:



0.3125" bolt secures leg to 10-gauge reception plate



Welded plate and #10 screws secure leg to top



Adjustable legs adjust in 1" increments with tamper resistant screws



1.375" nylon glides (standard)

LOBO Optional Features:



2.5" Grand Hank Glide (optional)



Dual wheel locking caster* (optional)



Soft tread locking caster* (optional)



3" heavy-duty casters raises heights by 4"* (optional)



Power modules (optional)



One piece bolt-on leg gusset



Full Color tote tray storage (optional) (can be interchanged with Tote Storage Unit)



Markerboard Top (optional)



Backpack hook (optional)

*Casters are NOT to be used as leveling devices and require field assembly.